

St Patrick's Day



Can you find...?

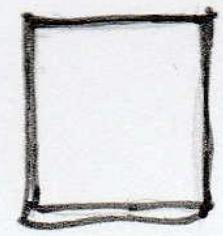
A Bumblebee



Daffodil/ Lus an chromchinn



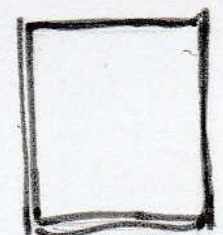
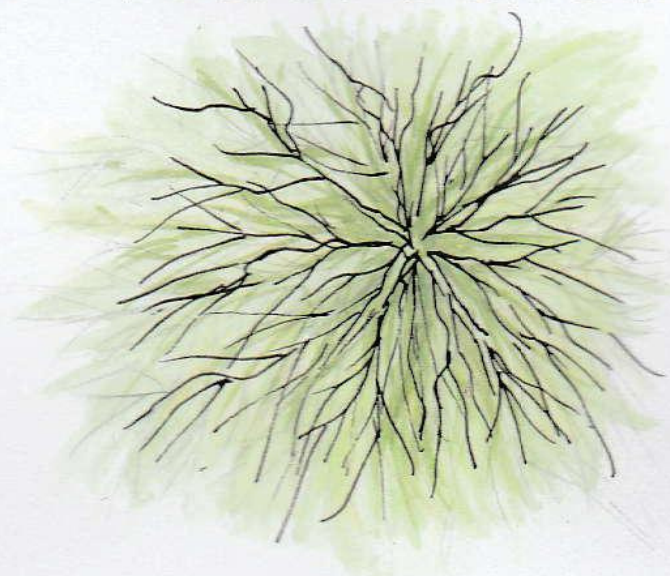
Moss/Caonach



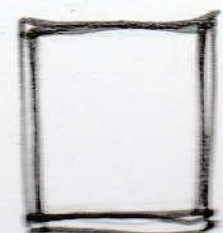
European Gorse/Aiteann Gallda



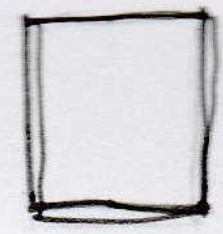
Lichen/Léicean



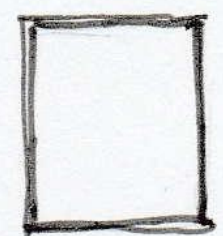
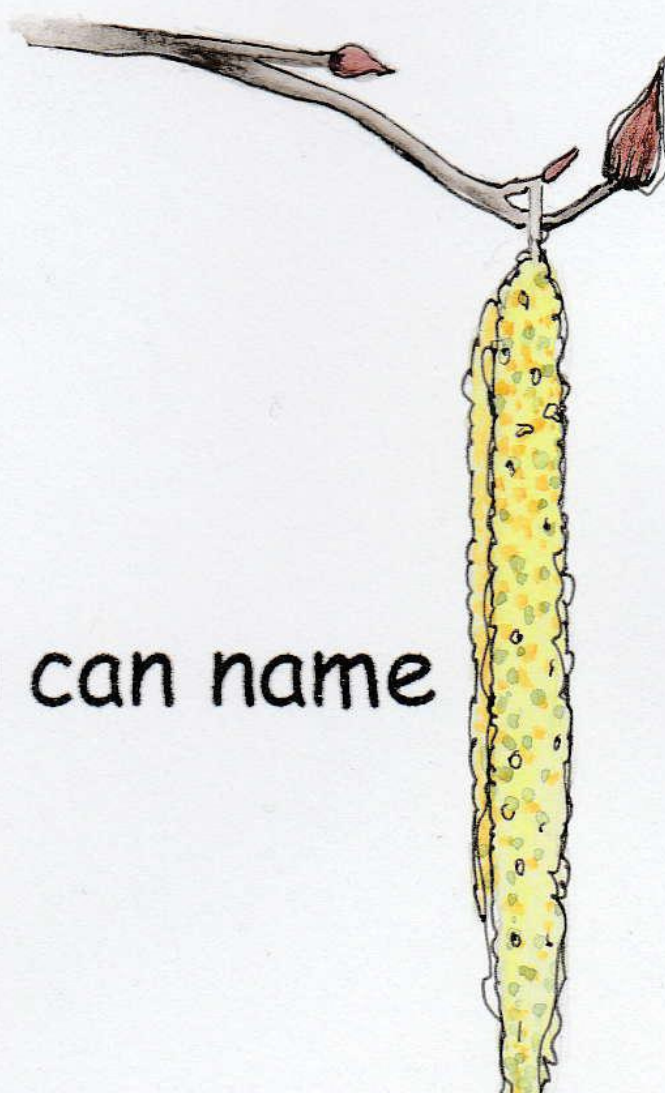
Dandelion/Caisearbhán



A Butterfly/Féileacán



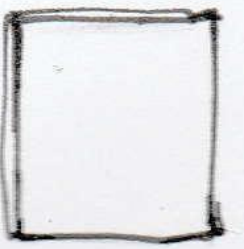
Alder catkins



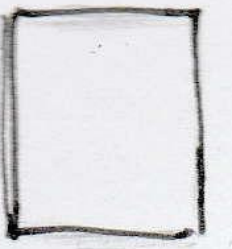
An insect you can name



Hawthorn (leaf)/Sceach Gheal



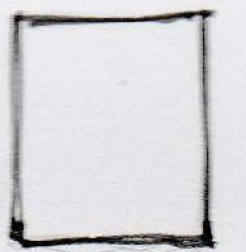
Animal foot prints



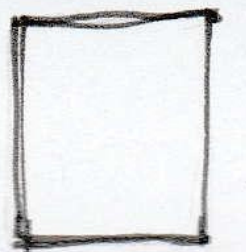
Wild garlic/creamh



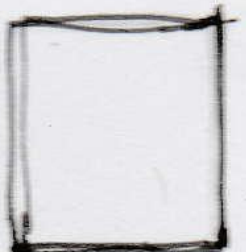
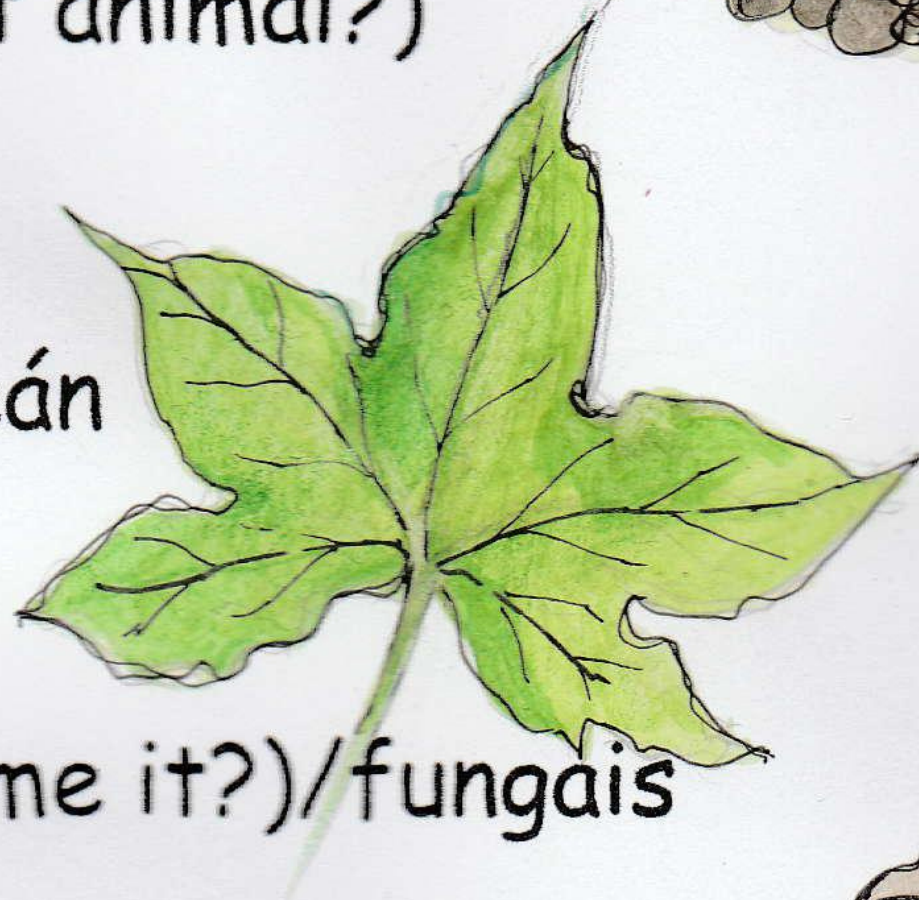
Easter Tree (flower)



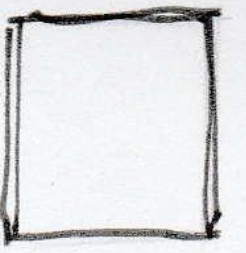
Animal scat (what animal?)



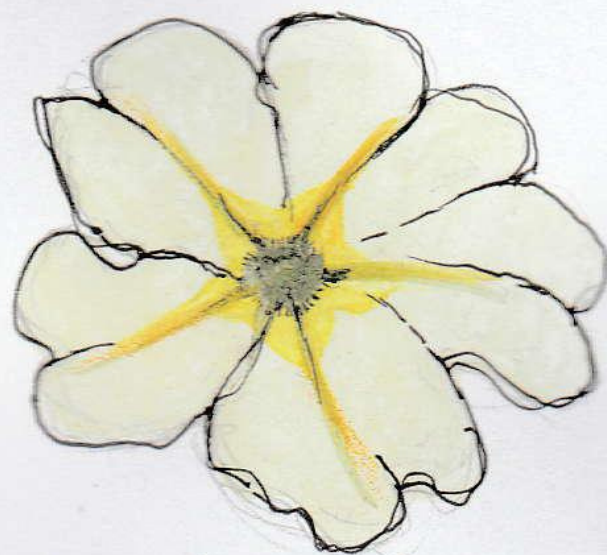
Ivy (leaf)/Eidhneán



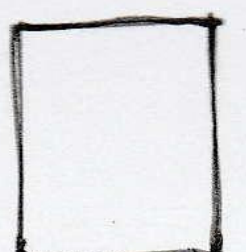
fungi (can you name it?)/fungais



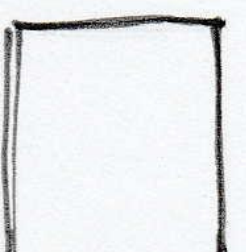
Primrose/Sabhaircín



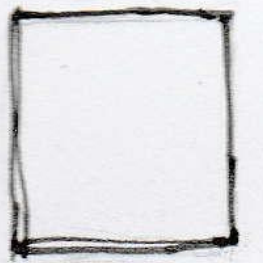
A crow (see or hear!)/préachán



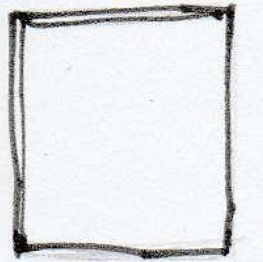
Daisy/Nóinín



A sample of soil erosion



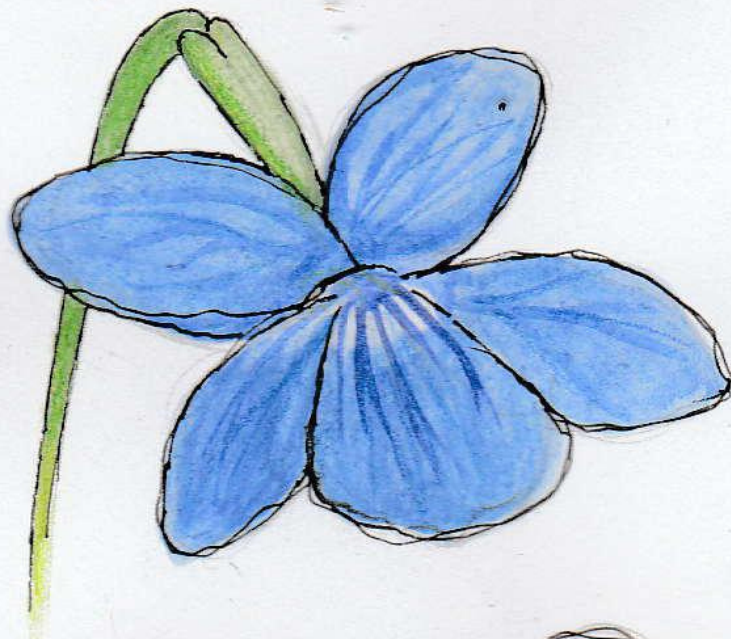
Speedwell (Germander)/Anuallach



Something that is changing back into the soil



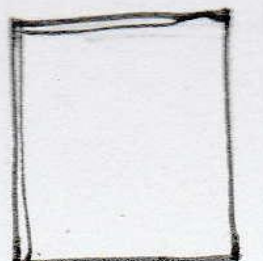
Dog Violet/Fanaigse



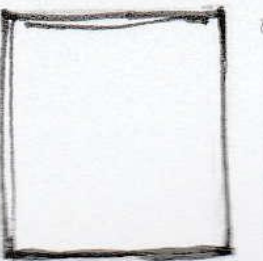
Wood Anemone/Lus na gaoithe



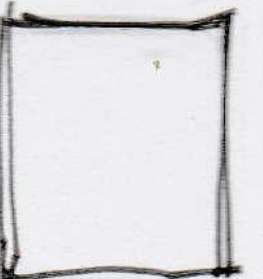
Finch/Glasán: What kind?



Buttercup (small)/Fearbhán beag

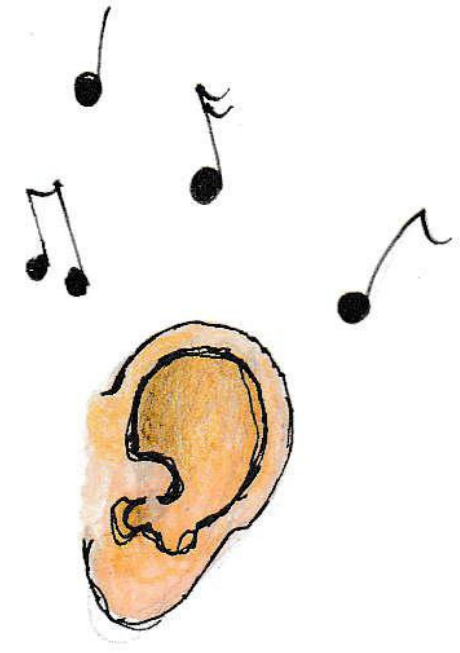


Blackbird/Lon dubh



Stand still, close your eyes and listen!

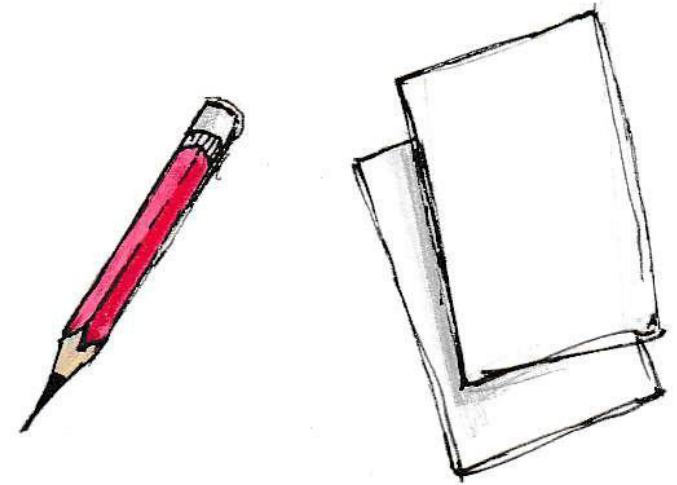
What sounds do you hear?



Look down towards
your feet. What do
you observe around
your feet?

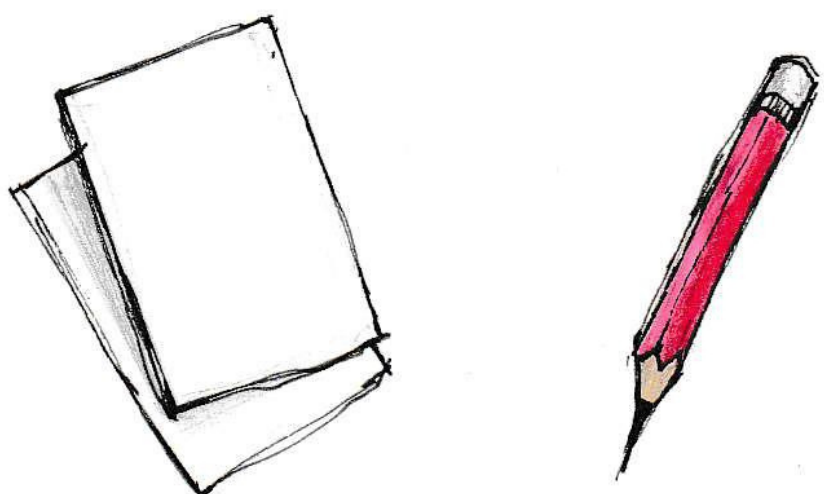
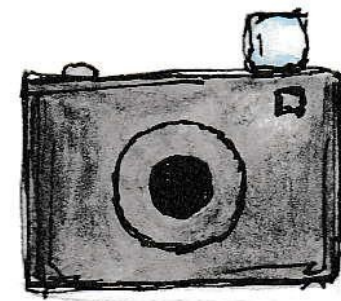


Get a close up look of a flower petal
or a leaf and draw what you see!



Look up at the sky.
What 3 things do you
see?

Can you spot any creatures which
are **camouflaged**? Take a photo of
what you see!



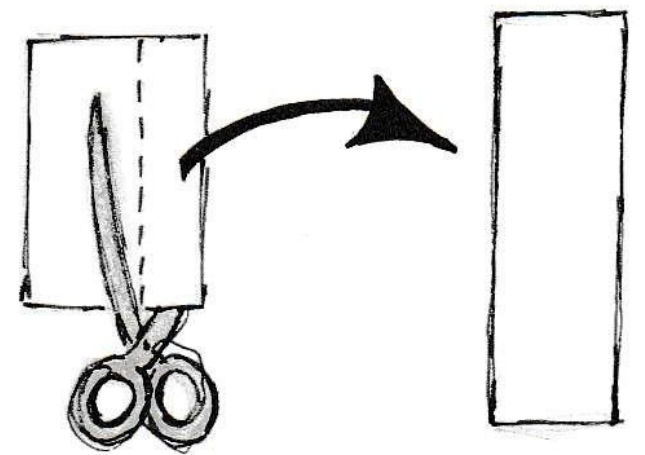
Draw a map of your
walk!

Things you can make when you get home!

1. You can write and draw about your trail and what you saw in a Nature Journal!

2. Make a bookmark! Draw/paint something that really interested you on the trail. You'll need:

- A sheet of card (any colour)
- A pair of scissors
- Paints/markers/colouring pencils



3. Make your own bird-feeder! You'll need:

- A plastic water or soft drinks bottle (any size)
- A pair of scissors or a screw-driver
- A couple of twigs/branches (6-10 inches in length)

